

SECTION 07 - METEOROLOGY

Index

Instruments and weather stations

Page 162



Wall thermometer

2080

Graduation: -30°C +50°C.
Plastic stand, white scale.

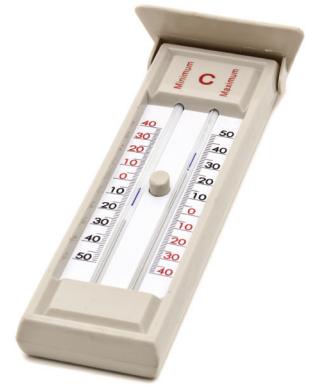


2080

Indoor and outdoor max-min thermometer

2038

The item is mounted on plastic base and endowed with a small shelter for outdoor usage.



2038

August's psychrometer

2041

It is mounted on metal base and endowed with two thermometers and respective calculation chart.
Dimensions: 27 x 7 cm.

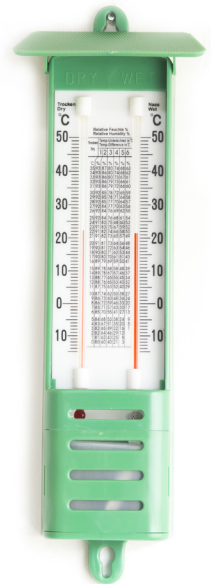


2041

Psychrometer

2033

It is mounted on plastic base and endowed with two thermometers and respective calculation charts.
Dimensions: 32 x 16 cm.



2033

Wall metal barometer

1054

Instrument diameter: 57 mm.
Base diameter: 90 mm.



1054

Synthetic hair hygrometer

2081

Diameter: 130 mm.



2081

Rain gauge

2098

It is suitable to be driven into the ground and is made of plastic.



2098

Didactic anemometer

2120

It is easy to be used ; it points out both direction and intensity of the wind.



2120

Weather station

2082

Metal structure. Diameter of tools 70mm

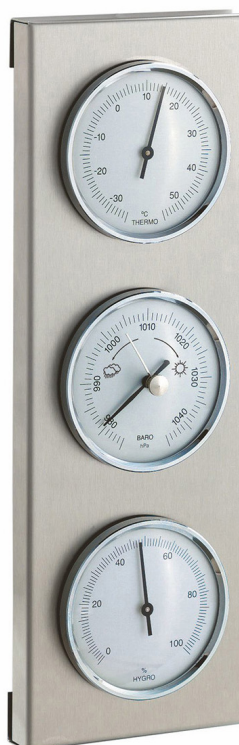
Composed of:

1 Thermometer -35 +55°C.

1 Barometer 975 – 1045 mbar.

1 Hygrometer 0 – 100%.

Dimensions: 282×96mm.



2082

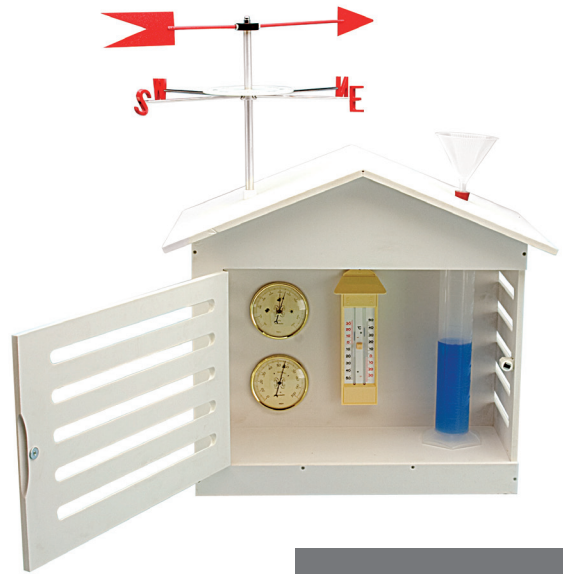
Weather shelter station

2084

Forex structure, suitable for outdoor usage. Dimensions: 33x48x58 cm.
 Metal parts made of stainless material.
 With:
 1 Rain gauge
 1 Max/min thermometer
 1 Barometer
 1 Hygrometer
 1 Wind's direction indicator with wind rose



2084 on 2061



2084

Stand for meteorological shelter station

2061

Made of fire-glazed metal.
 Dimensions: 35 x 50 x 100 cm.

2061

WiFi color weather center with 5in1 profi sensor

8256

Wi-Fi weather station with multifunction sensor, data sharing via app (supports firmware updates).
 Measurement of wind speed, air direction and humidity, temperature, amount of precipitation and moon phases.
 Time synchronization via the Internet, alarm clock with snooze function, alarm for maximum and minimum values, snow / ice warning, atmospheric pressure display and perceived outside temperature.
 Supports up to seven additional wireless sensors (available separately).
 Meteorological index of the dew point, wind chill factor and heat index.
 Package contents: base station, sensor with mounting accessories, power supply.

Technical data

Indication option

Display type Digital
 Season

- Summer
- Winter
- Spring
- Autumn

Time and date indication

Languages

- Danish
- German
- English

Internal temperature yes

Probability of precipitation yes

Time trend yes

General technical data

Black colour
 Housing material Plastic
 Mounting type Support
 5 year extended warranty

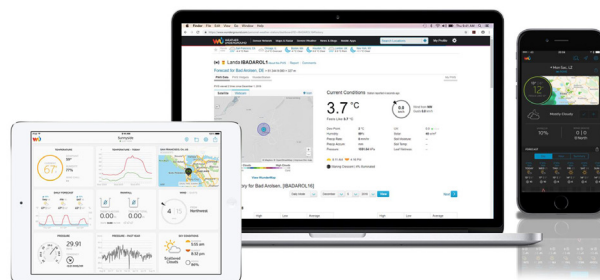
Dimensions and Weights

Total length 168 mm
 Total width 143 mm
 Total height 24 mm
 Net weight 355 g

Electronics, hardware & software

Main features

Outdoor temperature (° C / ° F)
 Battery 2 3x AA, 1.5V and 1x CR2032, 3V
 868 MHz emission frequency



8256